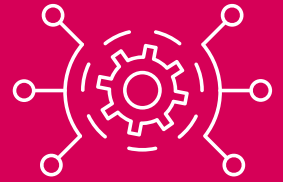


# IntelliShun™

ADVANCED SHUNNING



## Bi-directional IP shunning

### The problem: A determined enemy

Companies of all sizes are under relentless attacks from cyber criminals using automation and stealth to infiltrate networks. Malware is programmed to communicate back to command and control sites once it is inside the network, to deliver stolen information or receive further instructions.

### The solution: IntelliShun

The IntelliShun managed service secures your network perimeter via systematic bi-directional IP shunning. An IntelliShun device is deployed outside the perimeter—loaded with our ShadowNet intelligence feed—to block inbound traffic from malicious IPs. Outbound traffic is also analyzed as part of IntelliShun’s service and communication to known criminal sites is prevented.

- / Line speed blocking against malicious IPs
- / Rapid install and immediate time-to-value
- / Continual threat intelligence updates
- / Augments existing security layers
- / Accepts customer-provided blacklists
- / Operates autonomously outside of firewall

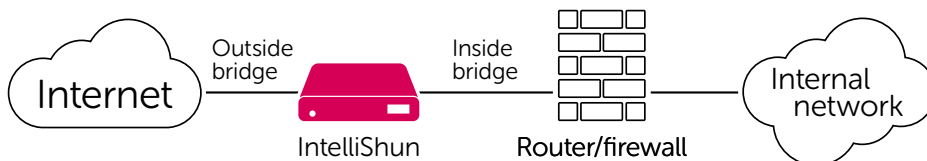
### The IntelliShun user interface



IntelliShun features a rich user interface that provides visibility into the status of your network and the threats being averted.

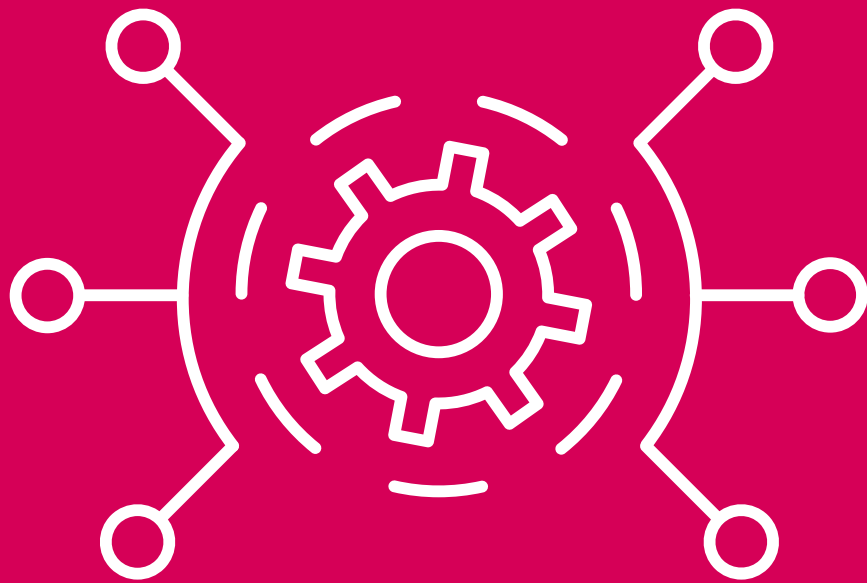
- / View types of attacks and generate custom reports
- / Includes support for whitelisting

### IntelliShun is installed outside the firewall



**Call us at  
1.855.639.4427  
to put us to the test.**





IntelliShun™  
/ ADVANCED SHUNNING