

ShadowNet™

/ GLOBAL THREAT INTEL



Threat intelligence for mechanized mitigation

The problem: Much threat intel is not accurate or actionable

Bloated blacklists, obsolete data and high false positive rates are symptomatic of cyber threat intelligence that is not actively scrutinized and refined for your environment. Rendering that information stale or of little value.

The solution: ShadowNet

Developed by RA Labs, ShadowNet is the aggregation and analysis of data from a wide range of intelligence sources, processed into a precise shun list. ShadowNet can be provisioned on RA purpose-built devices, or made available for ingest by your existing firewall, IDS/IPS, or SIEM.

ShadowNet is:

/ Actionable

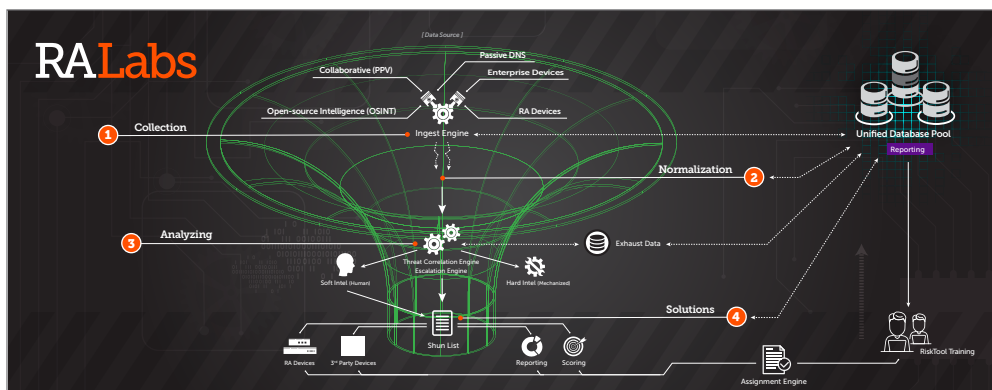
ShadowNet continuously intakes, updates, and analyzes data, enabling near real-time generation of actionable intelligence. The result is a consolidated intelligence feed you can use with confidence to mitigate unwanted and unauthorized network traffic. ShadowNet can be deployed in any network environment without adversely affecting network performance for immediate protection.

/ Relevant

RA Labs works around the clock for you. RA Labs veteran research team and patented expert systems ensure the attack data we provide is of the highest value for the most current threats.

/ Timely

Building on the philosophy that only a networked defense can combat a networked adversary - ShadowNet leverages threat intelligence gathered from RA-supported devices from around the world. These devices are updated in near real-time with the most current attack data creating a resilient and timely networked defense structure.

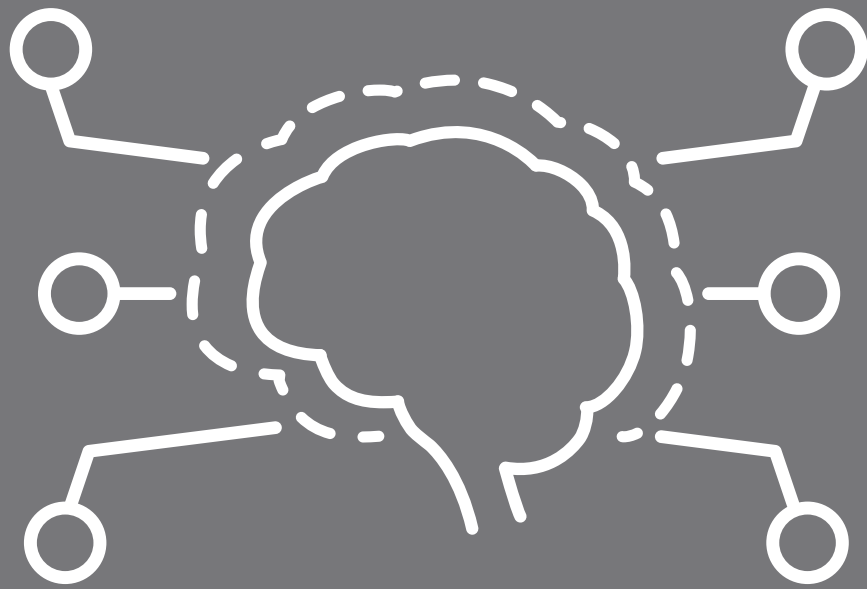


How we develop ShadowNet

- 1. Collection** – RA Labs continuously aggregates data from a wide range of high value sources and performs an immediate correlation against our existing database.
- 2. Normalization** – Data is normalized to a common format for analysis and where necessary more efficient distribution.
- 3. Analyzing** – Analysis of the normalized data is performed. The output of that analysis is either processed for an immediate “mechanized” response, or forwarded to our Threat Intelligence Team for further research. Exhaust data is assimilated into our database for further scrutiny or future reference.
- 4. Solutions** – ShadowNet can then be deployed in a number of beneficial ways; ShadowNet directly fuels our IntelliShun and ThreatSweep mitigation services. It can be exported for ingest into your existing network security devices, and ShadowNet is critical in updating our RiskTool training content.

Call us at
1.855.639.4427
to put us to the test.





ShadowNet™
/ GLOBAL THREAT INTEL



RiskAnalytics.com