

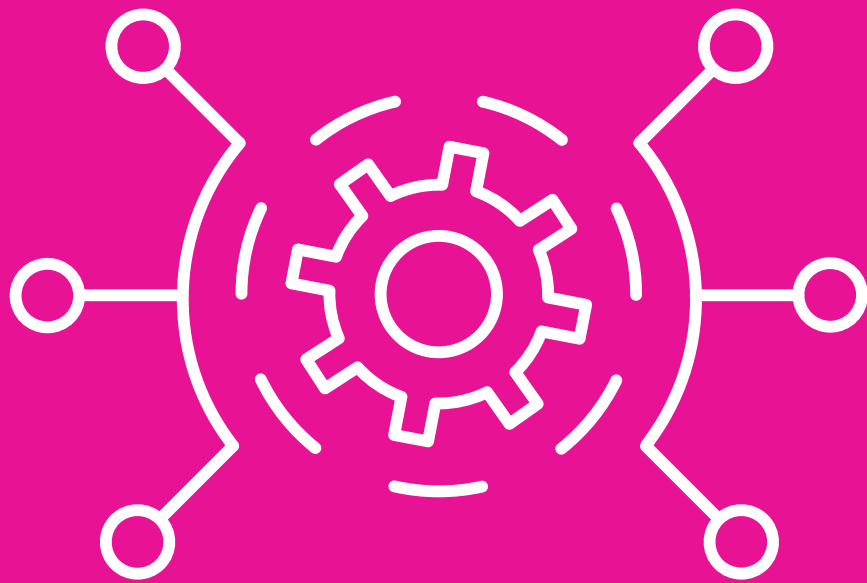


Technical specifications / IntelliShun-10G

Device model	IntelliShun-10G
Shun bridge throughput	Approximately 8Gbps
Shun bridge interface	10Gbps SPF+
Shun bridge hardware	Intel x520-DA2
Management interface	RJ-45
Management interface speed	10/100/1000 Mbps
RAM	DDR4 PC1700
Processor	Intel Xeon
Processor cores	4 cores
Processor speed	3.30 Ghz
Typical shun bridge latency	<10 microseconds
Power supply	Two
Internal storage	RAID-1 SATA hot-swappable
Fans	10 internal



Call us at
1.855.639.4427
to put us to the test.



IntelliShun10G™
/ ADVANCED SHUNNING