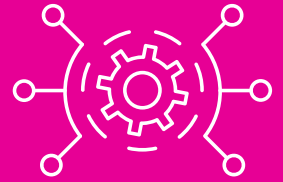


IntelliShun10G™

ADVANCED SHUNNING



Bi-directional IP shunning

The problem: A determined enemy

Companies of all sizes are under relentless attacks from cyber criminals using automation and stealth to infiltrate networks. Malware is programmed to communicate back to command and control sites once it is inside the network, to deliver stolen information or receive further instructions.

The solution: IntelliShun10G

The IntelliShun10G managed service secures your network perimeter via systematic bi-directional IP shunning. An IntelliShun10G device is deployed outside the perimeter—loaded with our ShadowNet intelligence feed—to block inbound traffic from malicious IPs. Outbound traffic is also analyzed as part of IntelliShun10G's service and communication to known criminal sites is prevented.

- / Line speed blocking against malicious IPs
- / Rapid install and immediate time-to-value
- / Continual threat intelligence updates
- / Augments existing security layers
- / Accepts customer-provided blacklists
- / Operates autonomously outside of firewall
- / Uses a Gigabit ethernet for the management and service interfaces
- / Features a 10 Gigabit bridge
- / Features two redundant internal service-class power supplies
- / 10G bridge provides two slots for client-supplied *SFP+ modules.

* SFP+ modules placed in IntelliShun 10G should match those already in use on the customer's network, which may vary by network environment.

** IntelliShun 10G bridge can accept RJ45 Gigabit ethernet SFP modules as well

The IntelliShun10G user interface



IntelliShun10G features a rich user interface that provides visibility into the status of your network and the threats being averted.

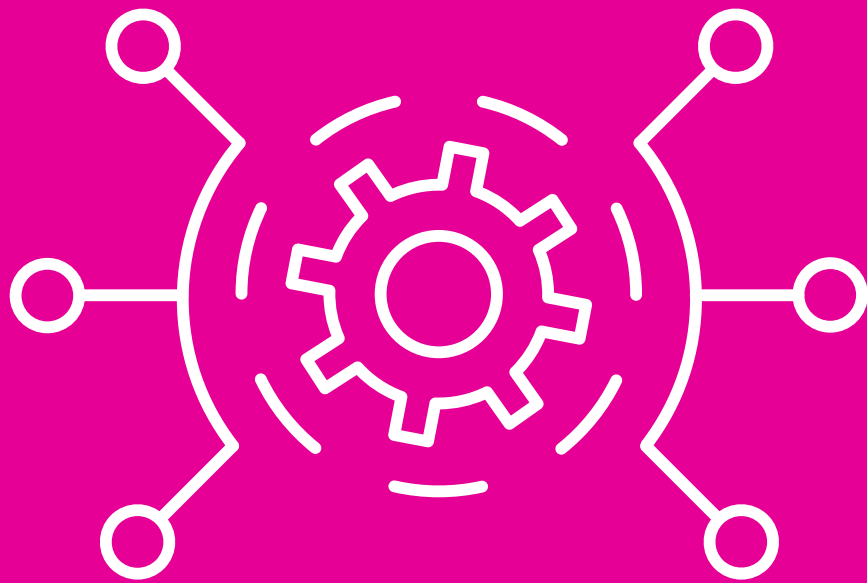
- / View types of attacks and generate custom reports
- / Includes support for whitelisting

IntelliShun10G can be installed inside or outside the firewall



Call us at
1.855.639.4427
to put us to the test.





IntelliShun10G™
/ ADVANCED SHUNNING